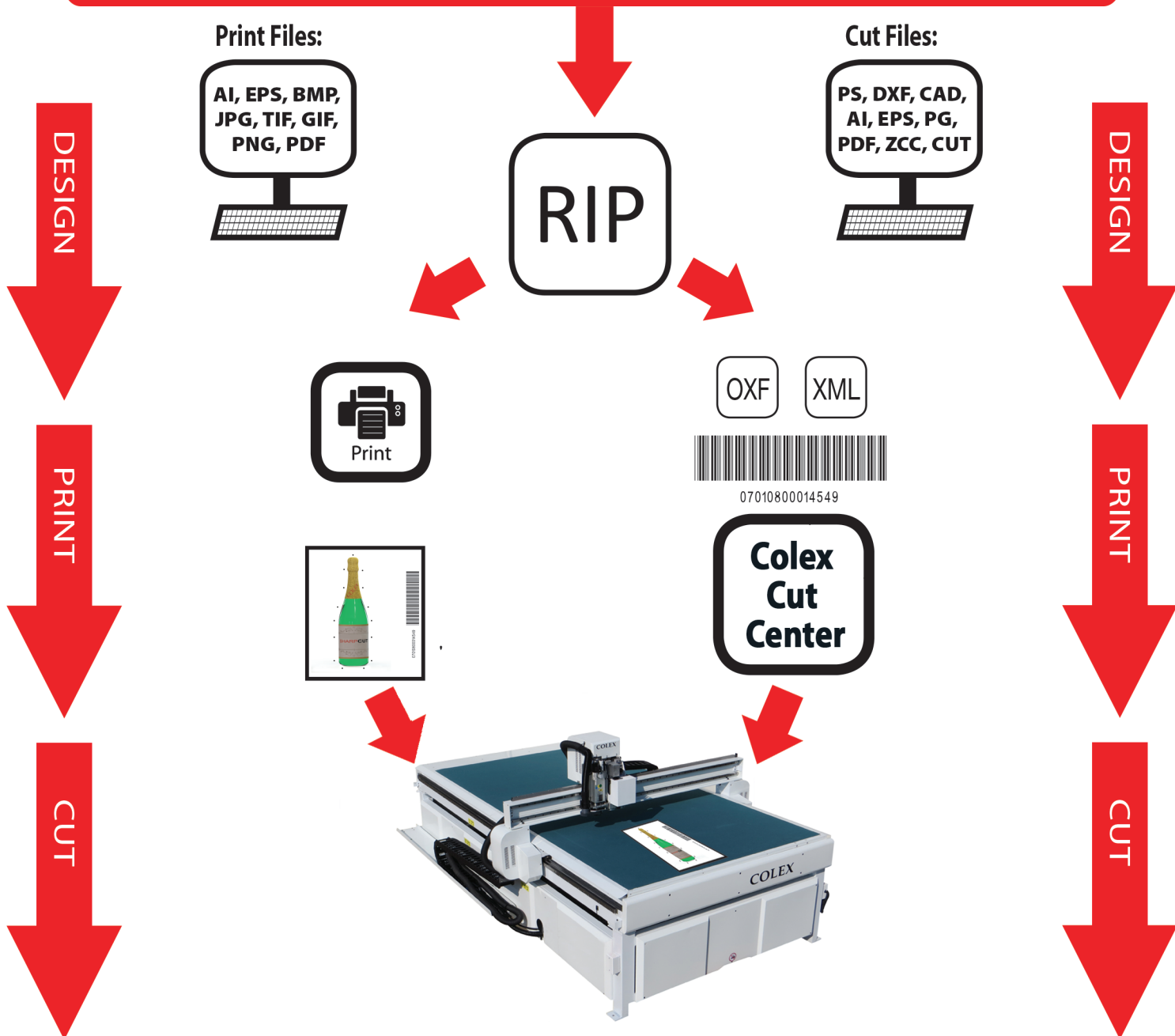


WORKFLOW

compatible with

Colex Cut Center **VISION REGISTRATION SYSTEM**

The Sharpcut, powered by Colex Cut Center, can read any diameter registration mark, crop mark or square .

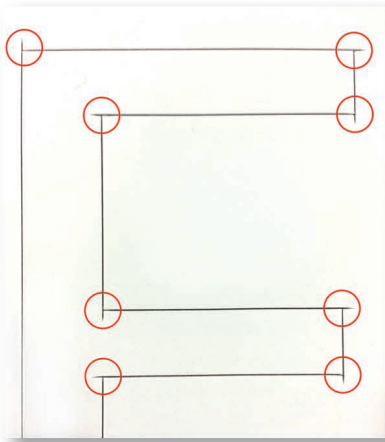
The Colex Cut Center Vision Registration corrects distortions by adjusting each point of your cut path independently. Distortions commonly found in flexible substrates, laminated graphics and textiles are automatically compensated and aligned perfectly.

REGISTRATION CAMERA

- High Resolution Camera reads registration marks quickly and easily delivering efficient, reliable vision registration.
- Optimally positioned allowing sufficient clearance to accept materials up to 50mm/2" thick.
- Automatically reads registration marks even on high gloss media without any camera adjustments.

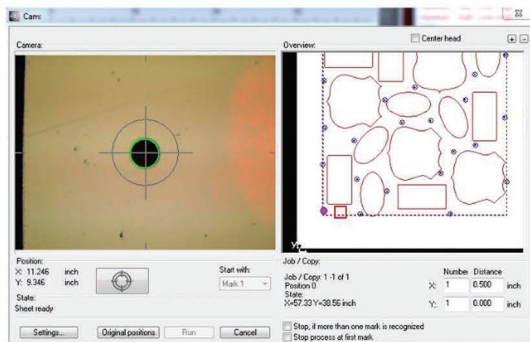
OVERCUT COMPENSATION

When cutting certain materials, there is an overcut at the corners. The length of these overcuts depends on the knife that is being used. The overcut feature within the software, automatically compensates for a perfect cut.



EDGE RECOGNITION

The Edge Recognition allows the camera to read corners of media that create visibility issues (i.e. retroreflective, etc).



Colex Cut Center **IMPORT FILTERS**

Colex Cut Center offers a wide variety of file import filters - vector and bitmap formats that support:

*.PDF, *.DXF, *.AI, *.WMF, *.EPS, *.PLT, *.IK, *.CDR, *.CMX, and *.HPGL.

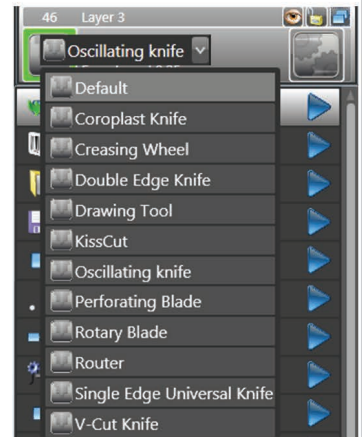
RIP EXCHANGE FORMATS	
*.CUT	I-Cut (up to Version 6.5)
*.OXF	Optiscout, Caldera, Cadlink, ColorGATE, Wasatch, Onyx, SAI.
*.ZCC	Zund Cut Center
*.OXX	Optiscout xml, EFI, Multivisioncutter
*.XML	All RIP Software
*.PDF	Prepare It, Esko Workflow Suite

Colex Cut Center plug-ins are capable of exporting data from:

CORELDRAW, Illustrator & AutoCAD's desktop to Colex Cut Center easily.

MATERIAL LIBRARY

- Colex Cut Center includes a continually expanding material library in addition to the pre-existing library.
- Allows operator to create custom profiles to suit specific workflow.
- Create and store individual settings for specific media and tools that are cut on a repeated basis.
- Time saving feature that executes multiple actions at a click of a button.



COMPATIBLE SOFTWARE (OPTIONAL)

- CAD & Graphic Systems Compatible
- 3D Software
- 2D Software
- Packaging Design Software
- And more

The Sharpcut is compatible with 3rd party software that avoids the "lock-in trap" and allows the ability to expand for future workflow.